



# Cattle on Feed

ISSN: 1948-9080

---

Released November 21, 2018, by the National Agricultural Statistics Service (NASS), Agricultural Statistics Board, United States Department of Agriculture (USDA).

## Special Note

The December 2018 Cattle on Feed report will be released on December 20, 2018 at 3:00 P.M. EST at [www.nass.usda.gov](http://www.nass.usda.gov). Please contact the Livestock Branch at (202) 720-3570 or email at [hq\\_sd\\_lb@nass.usda.gov](mailto:hq_sd_lb@nass.usda.gov) with any questions or concerns.

## United States Cattle on Feed Up 3 Percent

**Cattle and calves on feed** for the slaughter market in the United States for feedlots with capacity of 1,000 or more head totaled 11.7 million head on November 1, 2018. The inventory was 3 percent above November 1, 2017.

**Placements** in feedlots during October totaled 2.25 million head, 6 percent below 2017. Net placements were 2.18 million head. During October, placements of cattle and calves weighing less than 600 pounds were 640,000 head, 600-699 pounds were 525,000 head, 700-799 pounds were 450,000 head, 800-899 pounds were 363,000 head, 900-999 pounds were 180,000 head, and 1,000 pounds and greater were 90,000 head.

**Marketings** of fed cattle during October totaled 1.89 million head, 5 percent above 2017.

**Other disappearance** totaled 69,000 head during October, 5 percent below 2017.

**Cattle on Feed Inventory, Placements, Marketings, and Other Disappearance on 1,000+ Capacity Feedlots – United States: November 1, 2017 and 2018**

Item	Number		Percent of previous year
	2017	2018	
	(1,000 head)	(1,000 head)	(percent)
On feed October 1 .....	10,813	11,400	105
Placed on feed during October .....	2,393	2,248	94
Fed cattle marketed during October .....	1,801	1,887	105
Other disappearance during October .....	73	69	95
On feed November 1 .....	11,332	11,692	103

**Cattle on Feed Inventory, Placements, Marketings, and Other Disappearance on 1,000+ Capacity Feedlots – United States: October 1, 2017 and 2018**

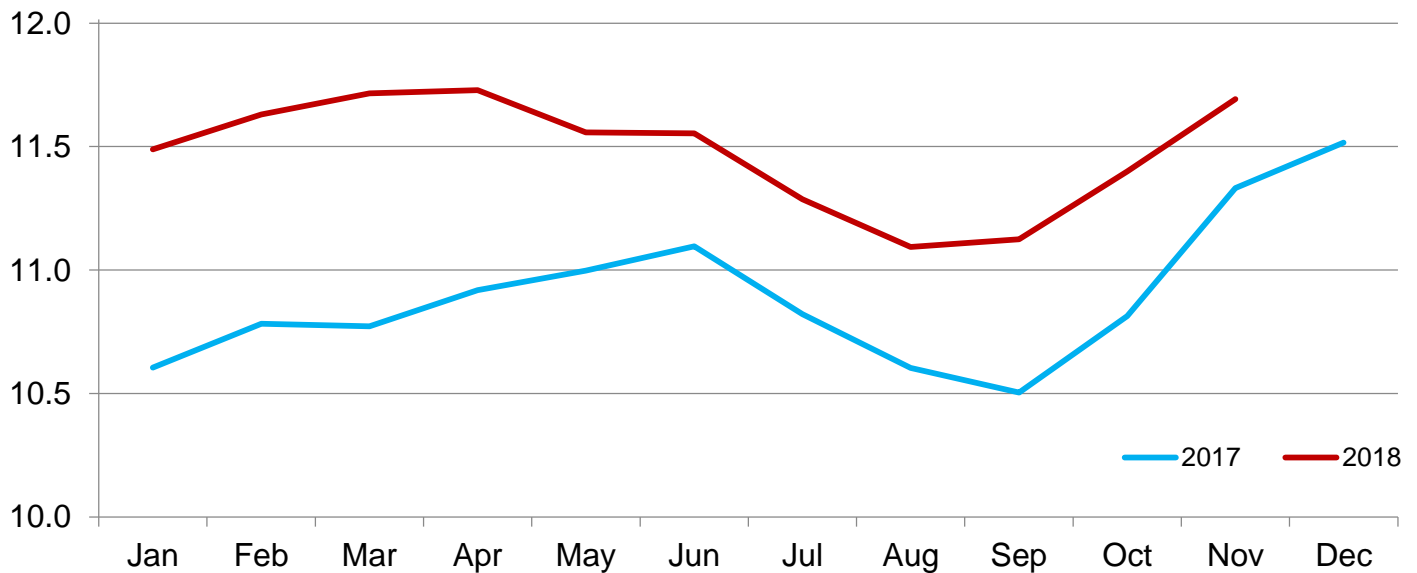
Item	Number		Percent of previous year
	2017	2018	
	(1,000 head)	(1,000 head)	(percent)
On feed September 1 .....	10,504	11,125	106
Placed on feed during September .....	2,150	2,051	95
Fed cattle marketed during September .....	1,783	1,719	96
Other disappearance during September .....	58	57	98
On feed October 1 .....	10,813	11,400	105

**Cattle on Feed Inventory on 1,000+ Capacity Feedlots by Month – States and United States: 2017 and 2018**

State	November 1, 2017	October 1, 2018	November 1, 2018		
			Number	Percent of previous year	Percent of previous month
	(1,000 head)	(1,000 head)	(1,000 head)	(percent)	(percent)
Arizona .....	252	295	287	114	97
California .....	440	520	520	118	100
Colorado .....	980	980	1,020	104	104
Idaho .....	255	260	270	106	104
Iowa .....	690	690	700	101	101
Kansas .....	2,290	2,370	2,360	103	100
Minnesota .....	150	130	150	100	115
Nebraska .....	2,520	2,430	2,590	103	107
Oklahoma .....	320	325	325	102	100
South Dakota .....	260	215	240	92	112
Texas .....	2,640	2,660	2,680	102	101
Washington .....	210	220	230	110	105
Other States .....	325	305	320	98	105
United States .....	11,332	11,400	11,692	103	103

**Cattle on Feed Inventory on 1,000+ Capacity Feedlots – United States**

Million head

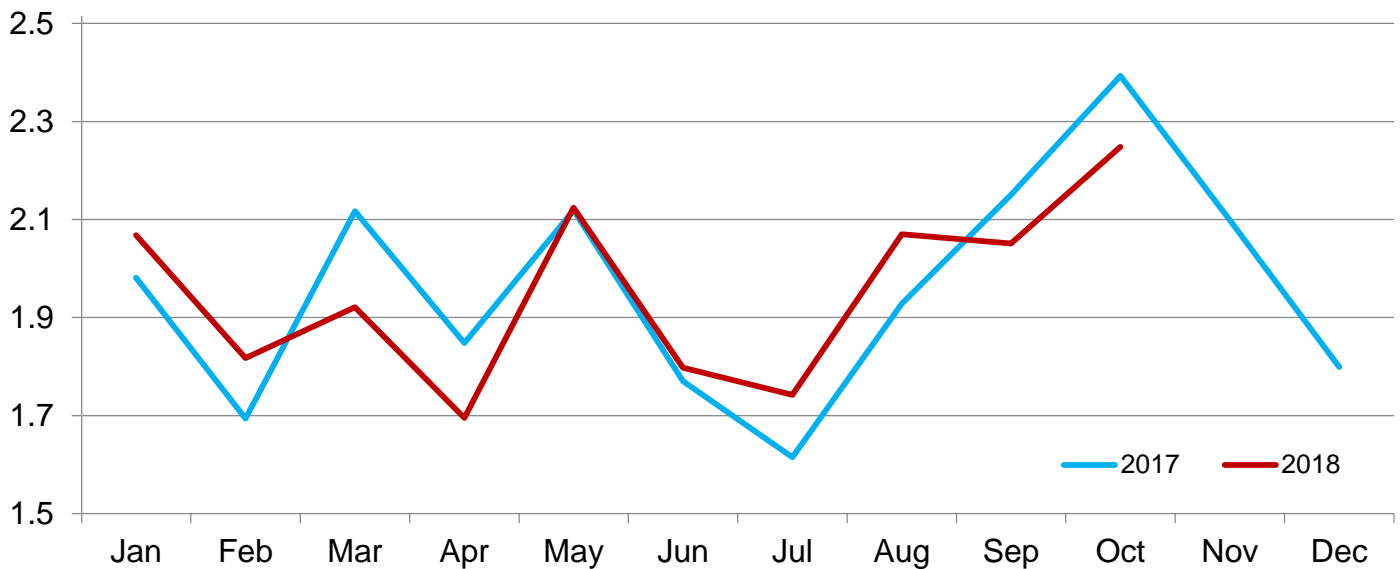


**Cattle Placed on Feed on 1,000+ Capacity Feedlots by Month – States and United States: 2017 and 2018**

State	During October 2017 (1,000 head)	During September 2018 (1,000 head)	During October 2018		
			Number (1,000 head)	Percent of previous year (percent)	Percent of previous month (percent)
Arizona .....	25	24	23	92	96
California .....	63	48	61	97	127
Colorado .....	195	235	195	100	83
Idaho .....	58	49	57	98	116
Iowa .....	142	89	107	75	120
Kansas .....	430	445	405	94	91
Minnesota .....	43	24	39	91	163
Nebraska .....	680	520	650	96	125
Oklahoma .....	59	55	54	92	98
South Dakota .....	87	59	74	85	125
Texas .....	505	395	465	92	118
Washington .....	50	44	51	102	116
Other States .....	56	64	67	120	105
United States .....	2,393	2,051	2,248	94	110

**Cattle Placed on 1,000+ Capacity Feedlots – United States**

Million head



**Cattle Placed on Feed by Weight Group on 1,000+ Capacity Feedlots and Month – States and United States: 2017 and 2018**

State	During October 2017							
	Under 600 lbs	600-699 lbs	700-799 lbs	800-899 lbs	900+ lbs <sup>1</sup>	900-999 lbs	1,000+ lbs	Total
	(1,000 head)	(1,000 head)	(1,000 head)	(1,000 head)	(1,000 head)	(1,000 head)	(1,000 head)	(1,000 head)
Colorado .....	55	40	35	35	30	(D)	(D)	195
Kansas .....	70	95	130	90	45	(D)	(D)	430
Nebraska .....	190	175	110	100	105	(D)	(D)	680
Texas .....	140	135	145	70	15	(D)	(D)	505
Other States ...	220	145	90	73	55	(D)	(D)	583
United States ..	675	590	510	368	(X)	160	90	2,393
State	During September 2018							
	Under 600 lbs	600-699 lbs	700-799 lbs	800-899 lbs	900+ lbs <sup>1</sup>	900-999 lbs	1,000+ lbs	Total
	(1,000 head)	(1,000 head)	(1,000 head)	(1,000 head)	(1,000 head)	(1,000 head)	(1,000 head)	(1,000 head)
Colorado .....	30	25	45	70	65	(D)	(D)	235
Kansas .....	65	90	130	100	60	(D)	(D)	445
Nebraska .....	55	55	85	140	185	(D)	(D)	520
Texas .....	145	105	90	45	10	(D)	(D)	395
Other States ...	130	55	80	111	80	(D)	(D)	456
United States ..	425	330	430	466	(X)	280	120	2,051
State	During October 2018							
	Under 600 lbs	600-699 lbs	700-799 lbs	800-899 lbs	900+ lbs <sup>1</sup>	900-999 lbs	1,000+ lbs	Total
	(1,000 head)	(1,000 head)	(1,000 head)	(1,000 head)	(1,000 head)	(1,000 head)	(1,000 head)	(1,000 head)
Colorado .....	55	40	30	40	30	(D)	(D)	195
Kansas .....	70	95	120	80	40	(D)	(D)	405
Nebraska .....	170	140	100	110	130	(D)	(D)	650
Texas .....	160	120	120	50	15	(D)	(D)	465
Other States ...	185	130	80	83	55	(D)	(D)	533
United States ..	640	525	450	363	(X)	180	90	2,248

(D) Withheld to avoid disclosing data for individual operations.

(X) Not applicable.

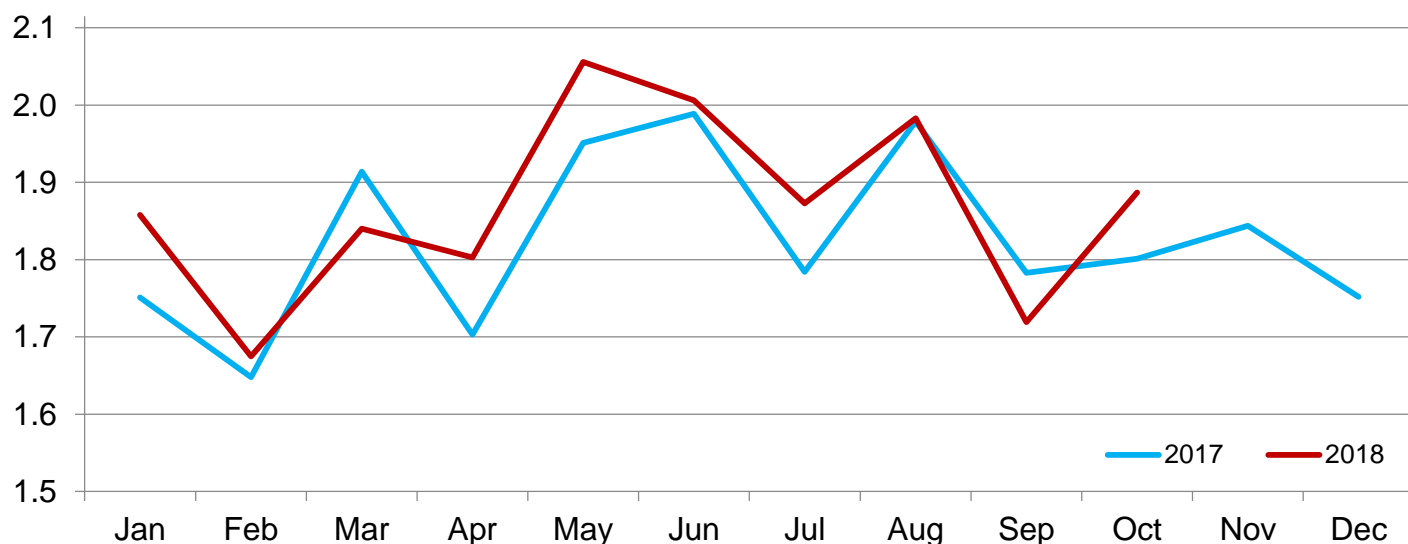
<sup>1</sup> The 900 pounds and greater weight group is the sum of 900-999 pounds and 1,000 pounds and greater weight groups.

**Cattle Marketed on 1,000+ Capacity Feedlots by Month – States and United States: 2017 and 2018**

State	During October 2017	During September 2018	During October 2018		
			Number	Percent of previous year	Percent of previous month
			(1,000 head)	(percent)	(percent)
Arizona .....	20	23	30	150	130
California .....	49	49	56	114	114
Colorado .....	150	150	150	100	100
Idaho .....	46	39	45	98	115
Iowa .....	99	75	93	94	124
Kansas .....	375	375	395	105	105
Minnesota .....	12	18	18	150	100
Nebraska .....	435	410	480	110	117
Oklahoma .....	57	48	52	91	108
South Dakota .....	45	42	48	107	114
Texas .....	445	405	430	97	106
Washington .....	38	33	40	105	121
Other States .....	30	52	50	167	96
United States .....	1,801	1,719	1,887	105	110

## Cattle Marketed on 1,000+ Capacity Feedlots – United States

Million head



### Cattle Other Disappearance on 1,000+ Capacity Feedlots by Month – States and United States: 2017 and 2018

State	During October 2017 (1,000 head)	During September 2018 (1,000 head)	During October 2018		
			Number (1,000 head)	Percent of previous year (percent)	Percent of previous month (percent)
Arizona .....	1	1	1	100	100
California .....	4	4	5	125	125
Colorado .....	5	5	5	100	100
Idaho .....	2	5	2	100	40
Iowa .....	3	4	4	133	100
Kansas .....	15	10	20	133	200
Minnesota .....	1	1	1	100	100
Nebraska .....	15	10	10	67	100
Oklahoma .....	2	2	2	100	100
South Dakota .....	2	2	1	50	50
Texas .....	20	10	15	75	150
Washington .....	2	1	1	50	100
Other States .....	1	2	2	200	100
United States .....	73	57	69	95	121

## Terms and Definitions of Cattle on Feed Estimates

**Cattle on feed** are steers and heifers being fed a ration of grain, silage, hay and/or protein supplement for slaughter market that are expected to produce a carcass that will grade select or better. It excludes cattle being "backgrounded only" for later sale as feeders or later placement in another feedlot.

**Placements** are steers and heifers put into a feedlot, fed a ration which will produce a carcass that will grade select or better, and are intended for the slaughter market.

**Marketings** are steers and heifers shipped out of feedlots to a slaughter market.

**Other disappearance** includes death loss, movement from feedlots to pasture, and shipments to other feedlots for further feeding.

## Statistical Methodology

**Survey Procedures:** During January and July all known feedlots in the United States with capacity of 1,000 or more head are surveyed to provide data for cattle on feed estimates. During the other months, all known feedlots from 16 States are surveyed. The 16 States account for approximately 98 percent of the cattle on feed in feedlots with capacity of 1,000 or more head. Individual State estimates are published monthly for 12 of the 16 States. Data collected from the remaining 4 States are used to establish the "Other States" estimates. These 4 States include Illinois, New Mexico, Oregon, and Wyoming. The "Other States" category represents all cattle on feed with a capacity of 1,000 or more head for the rest of the United States.

**Estimating Procedures:** These cattle on feed estimates were prepared by the Agricultural Statistics Board after reviewing recommendations and analysis submitted by Regional Field Offices. Regional and State survey data were reviewed for reasonableness with each other and with estimates from the previous month when establishing the current estimates.

**Revision Policy:** Revisions to previous estimates are made to improve month to month relationships. Estimates for the previous month are subject to revision in all States each month when current estimates are made. In February, all monthly estimates for the previous year, and the number of feedlots and annual marketings from two years ago are reviewed and subject to revisions. The reviews are primarily based on slaughter data, state check-off or brand data, and any other data that may have been received after the original estimate was made. Estimates will also be reviewed after data from the *Census of Agriculture* are available. No revisions will be made after that date and estimates become final.

**Reliability:** Since all 1,000+ capacity cattle on feed operators in every State are not included in the monthly survey, survey estimates are subject to sampling variability. Survey results are also subject to non-sampling errors such as omissions, duplications, and mistakes in reporting, recording, and processing the data. The effects of these errors cannot be measured directly. They are minimized through rigid quality controls in the data collection process and through a careful review of all reported data for consistency and reasonableness.

To assist users in evaluating the reliability of estimates in this report, the "**Root Mean Square Error**" is shown for selected items in the table on the following page. The "Root Mean Square Error" is a statistical measure based on past performance and is computed using the differences between first and latest estimates. The "Root Mean Square Error" for cattle on feed inventory estimates over the past 24 months is 0.0 percent. This means that chances are 2 out of 3 that the final estimate will not be above or below the current estimate of 11.7 million head by more than 0.0 percent. Chances are 9 out of 10 that the difference will not exceed 0.1 percent.

The table on the following page shows a 24 month record of the range of differences between first and latest estimates for selected items. Using estimates of number on feed as an example, changes between the first estimate and the latest estimate during the past 24 months have averaged 1,000 head, ranging from 0 to 15,000 head. During this period the initial estimate has been above the latest estimate 0 times and has been below the latest estimate 2 times. This does not imply that the initial estimate is likely to understate or overstate final inventory.

## Reliability of Monthly Cattle on Feed Estimates

[Based on data for the past 24 months]

Item	Root mean square error	90 percent confidence level	Difference between first and latest estimate				
			Average	Smallest	Largest	Months	
						Below latest	Above latest
	(percent)	(percent)	(1,000)	(1,000)	(1,000)	(number)	(number)
Number on feed .....	0.0	0.1	1	0	15	2	0
Placements .....	0.2	0.3	1	0	15	2	1
Marketings .....	0.1	0.2	0	0	10	0	1

## Information Contacts

Listed below are the commodity specialists in the Livestock Branch of the National Agricultural Statistics Service to contact for additional information. E-mail inquiries may be sent to [nass@nass.usda.gov](mailto:nass@nass.usda.gov).

Travis Averill, Chief, Livestock Branch .....	(202) 720-3570
Scott Hollis, Head, Livestock Section .....	(202) 690-2424
Sherry Bertramsen – Livestock Slaughter .....	(202) 690-8632
Holly Brenize – Sheep and Goats .....	(202) 720-0585
Donnie Fike – Dairy Products .....	(202) 720-4448
Heidi Gleich – Cattle, Cattle on Feed .....	(202) 720-3040
Mike Miller – Milk Production and Milk Cows .....	(202) 720-3278
Seth Riggins – Hogs and Pigs .....	(202) 720-3106



## Access to NASS Reports

For your convenience, you may access NASS reports and products the following ways:

- All reports are available electronically, at no cost, on the NASS web site: [www.nass.usda.gov](http://www.nass.usda.gov)
- Both national and state specific reports are available via a free e-mail subscription. To set-up this free subscription, visit [www.nass.usda.gov](http://www.nass.usda.gov) and click on “National” or “State” in upper right corner above “search” box to create an account and select the reports you would like to receive.

For more information on NASS surveys and reports, call the NASS Agricultural Statistics Hotline at (800) 727-9540, 7:30 a.m. to 4:00 p.m. ET, or e-mail: [nass@nass.usda.gov](mailto:nass@nass.usda.gov).

The U.S. Department of Agriculture (USDA) prohibits discrimination against its customers, employees, and applicants for employment on the basis of race, color, national origin, age, disability, sex, gender identity, religion, reprisal, and where applicable, political beliefs, marital status, familial or parental status, sexual orientation, or all or part of an individual's income is derived from any public assistance program, or protected genetic information in employment or in any program or activity conducted or funded by the Department. (Not all prohibited bases will apply to all programs and/or employment activities.)

If you wish to file a Civil Rights program complaint of discrimination, complete the [USDA Program Discrimination Complaint Form](#) (PDF), found online at [www.ascr.usda.gov/filing-program-discrimination-complaint-usda-customer](http://www.ascr.usda.gov/filing-program-discrimination-complaint-usda-customer), or at any USDA office, or call (866) 632-9992 to request the form. You may also write a letter containing all of the information requested in the form. Send your completed complaint form or letter to us by mail at U.S. Department of Agriculture, Director, Office of Adjudication, 1400 Independence Avenue, S.W., Washington, D.C. 20250-9410, by fax (202) 690-7442 or email at [program.intake@usda.gov](mailto:program.intake@usda.gov).



United States Department of Agriculture

USDA's  
95th Annual

# Agricultural Outlook Forum

**Growing Locally,  
Selling Globally**



February 21-22, 2019

Crystal Gateway Marriott Hotel, Arlington, Virginia

[www.usda.gov/oce/forum](http://www.usda.gov/oce/forum)

Follow us on Social Media (#AgOutlook)



@USDA



@usdagov



@USDA

